

Anti-ALDOC Antibody
Rabbit polyclonal antibody to ALDOC
Catalog # AP60217**Specification**

Anti-ALDOC Antibody - Product Information

Application	WB, IHC
Primary Accession	P09972
Other Accession	P05063
Reactivity	Human, Mouse, Rat, Rabbit, Monkey, Pig, Dog
Host	Rabbit
Clonality	Polyclonal
Calculated MW	39456

Anti-ALDOC Antibody - Additional Information**Gene ID** 230**Other Names**

ALDC; Fructose-bisphosphate aldolase C; Brain-type aldolase

Target/Specificity

Recognizes endogenous levels of ALDOC protein.

Dilution

WB~~WB (1/500 - 1/1000), IH (1/100 - 1/200)

IHC~~1:100~500

Format

Liquid in 0.42% Potassium phosphate, 0.87% Sodium chloride, pH 7.3, 30% glycerol, and 0.09% (W/V) sodium azide.

Storage

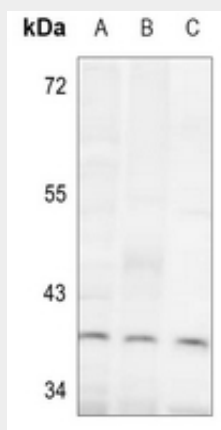
Store at -20 °C.Stable for 12 months from date of receipt

Anti-ALDOC Antibody - Protein Information**Name** ALDOC**Synonyms** ALDC**Anti-ALDOC Antibody - Protocols**

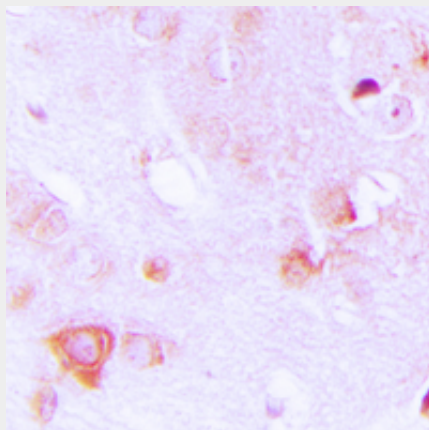
Provided below are standard protocols that you may find useful for product applications.

- [Western Blot](#)
- [Blocking Peptides](#)
- [Dot Blot](#)
- [Immunohistochemistry](#)
- [Immunofluorescence](#)
- [Immunoprecipitation](#)
- [Flow Cytometry](#)
- [Cell Culture](#)

Anti-ALDOC Antibody - Images



Western blot analysis of ALDOC expression in K562 (A), mouse testis (B), rat brain (C) whole cell lysates.



Immunohistochemical analysis of ALDOC staining in human brain formalin fixed paraffin embedded tissue section. The section was pre-treated using heat mediated antigen retrieval with sodium citrate buffer (pH 6.0). The section was then incubated with the antibody at room temperature and detected using an HRP conjugated compact polymer system. DAB was used as the chromogen. The section was then counterstained with haematoxylin and mounted with DPX.

Anti-ALDOC Antibody - Background

KLH-conjugated synthetic peptide encompassing a sequence within the center region of human ALDOC. The exact sequence is proprietary.